



Bed Bugs

Non-Residential Situations

Dale Hodgson, BCE CWCP

Regional Technical Manager

ROSE PEST SOLUTIONS

Cuyahoga County Bed Bug Task Force
Fall Conference
November 1, 2019

Non-Residential

Schools, Libraries

Hospitals, Nursing Homes/ Rehab Centers

Churches

Workplaces

Transportation (planes, trains, automobiles, cruise ships)

Theatres

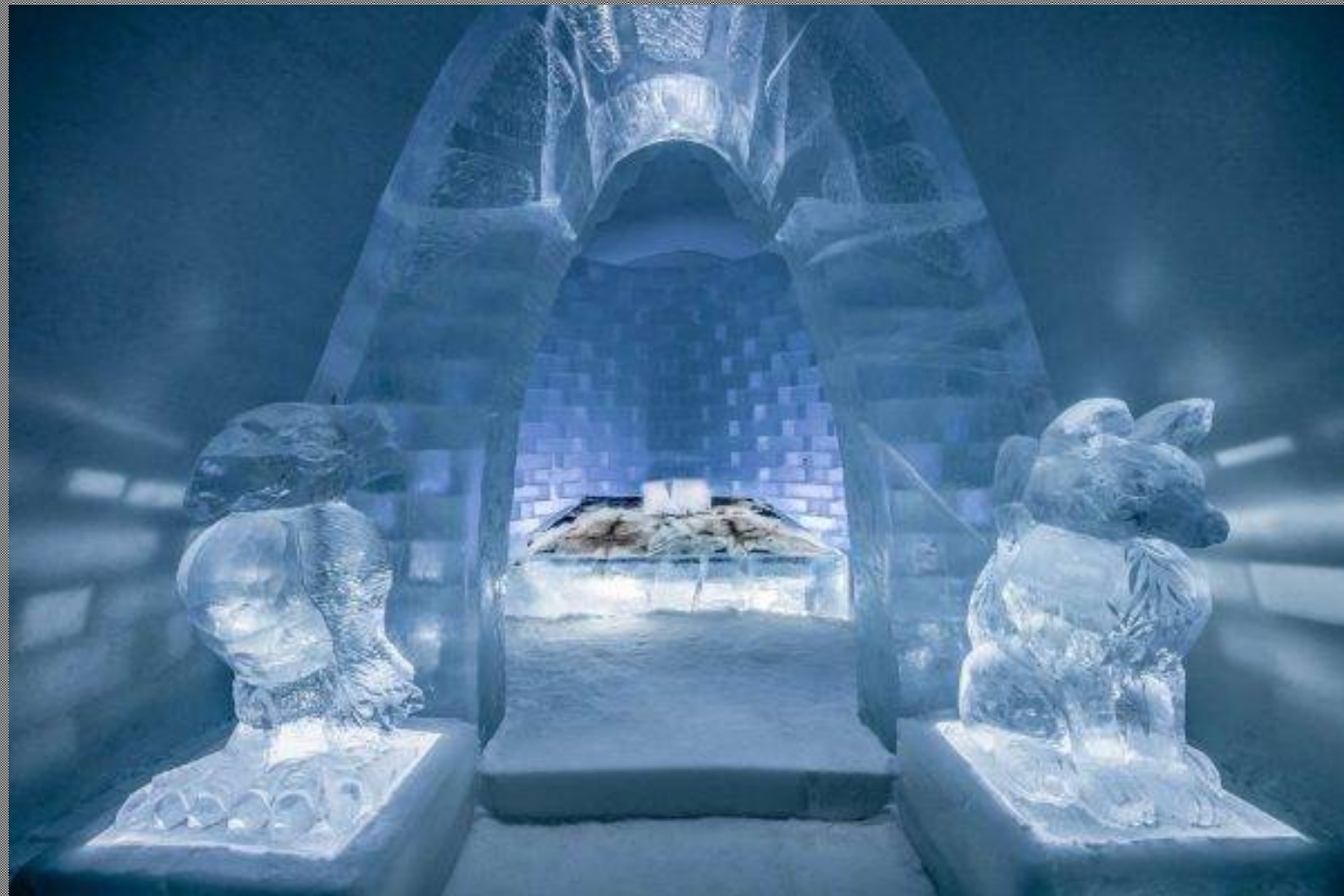
Summer Camps

Motels, Hotels, B&B's

In short, bed bugs can be anywhere we are!

Well, Except for Maybe.....

Ice Hotel Jukkasjarvi, Sweden



Non-Residential

Schools

Work Places

Healthcare

Hospitals- not counting patient rooms

Clinics

Ambulances

Life flights

Non-Residential Schools



Non-Residential Schools



Non-Residential Workplaces



Non-Residential Workplaces



Non-Residential Hospitals (ER's, other “no overnights”)



Non-Residential Health Care



How Do They Get Around?



How Do They Get Around?

Not always where one would think.....*photos courtesy of J Saltzman*



How Do They Get Around?



How Do They Get Around?



How Do They Get Around?



How Do They Get Around?



How Do They Get Around?



How Do They Get Around?



How Do They Get Around?



Usually Will Not See This.....



Or This.....



What is the Initial Reaction?



Initial Reaction

Panic

bedbugs are an “emotional” pest as well
attack when most vulnerable

School

Our Kids

Workplaces

We are Distracted

Healthcare

Our Sick/Injured

Initial Reaction

Introduction vs Infestation

Introduction

- a few at a time are carried in
- little to no reproduction
- fairly confined

Infestation

- high numbers
- all life stages present

Initial Reaction

Introduction vs Infestation

Introduction



Initial Reaction

Introduction vs Infestation

Infestation



Photo credit – Allison Taisey

Initial Reaction

Introduction vs Infestation

Infestation

*Photo courtesy
Steve Dykema, BCE*



Remember Where We Are Here....

Feeding Considerations

- need some time

- daylight vs night time

- activity level of environment

Reproductive Considerations

- need a blood meal to molt to next instar

- female requires blood meal

Remember Where We Are Here....

Harborage Considerations

how much available harborage?



Schools, Why So Tough?

Early Detection is Rare

- rarely seen because of activity (except for 24/7)

- bites not noticeable at first

- reluctance of students talking about a “bug problem” at home

Visual Inspection is Difficult

- cubicle/furniture construction

- individual student backpacks

- electronics

Schools, Why So Tough?

Bed Bugs Disperse into Other Areas

hitchhike in files/equipment

move along walls, other straight lines

building cleaning practices (nighttime)

**Movement from desk to desk as students
change rooms**

Workplaces, Why So Tough?

Early Detection is Rare

- rarely seen because of activity (except for 24/7)
- bites not noticeable at first

Visual Inspection is Difficult

- cubicle/furniture construction
- electronics

Bed Bugs Disperse into Other Areas

- hitchhike in files/equipment
- move along conduits, cubicle bases
- building cleaning practices (nighttime)

Workplaces, Why So Tough?

ID of Introduction Point is Difficult

Should not “blame”

could have been from shipment/vendor

Reintroduction is a Constant Threat

cannot legally inspect worker's homes

Some Items Difficult to Treat

electronics

Healthcare, Why So Tough?

Very active, lots of people traffic

Priority is the patients, not insects

Equipment is very complex/sensitive

very little room in a life flight 'copter

very little room in an ambulance

No "pre-inspection" of a person as they are brought in; personal belongings are not checked at all

Non-Residentials, Why So Tough?

Unusual Situations (Legal, Ethical, Human Relations)

- worker perceptions (allergies, pesticide use)

- union issues

- reputation of facility (being called "dirty")

- anxiety about "taking bugs home"

- privacy (finding out home is infested)

- stigma (school students)

- legalities (who caused "infestation")

- use of the word "infestation" rather than "introduction"

Treatment/Remediation

Treatment Options

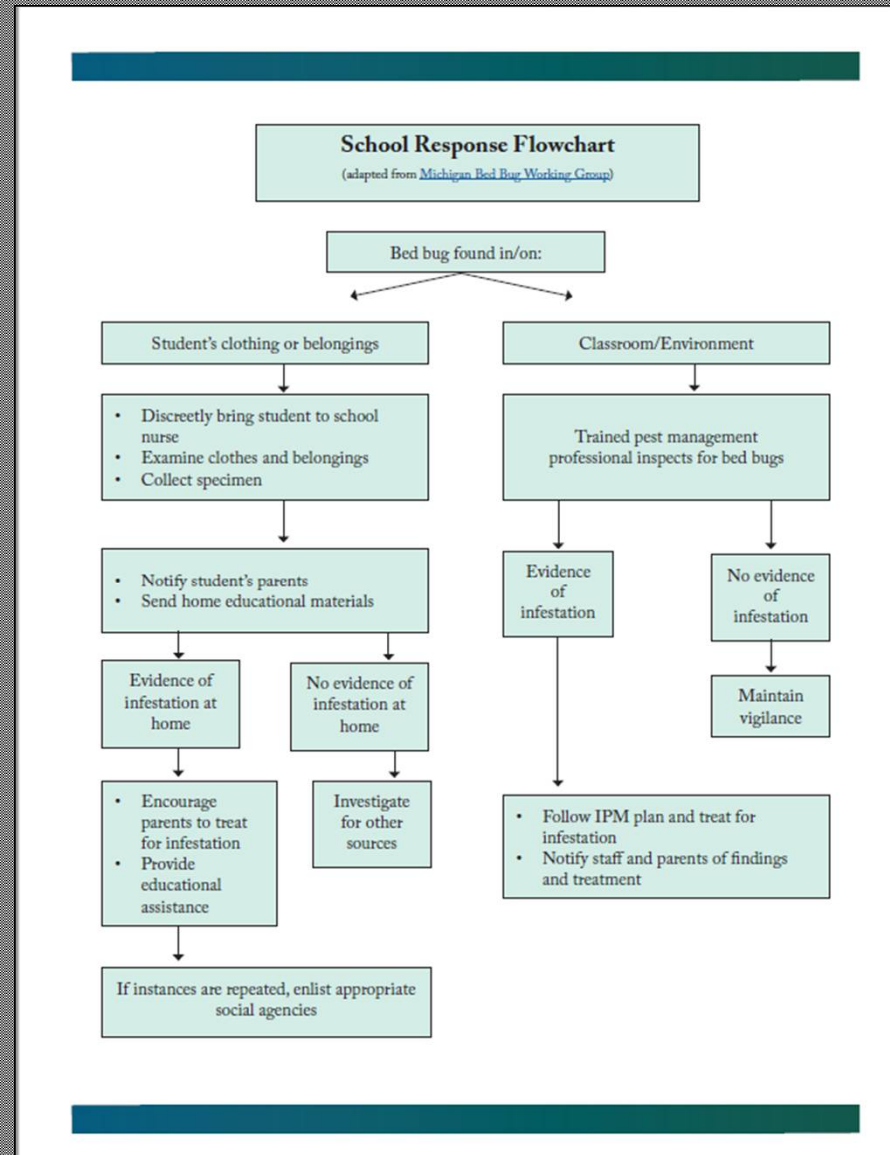
ODA regs; cannot apply a pesticide if not a certified applicator

Inspections (visual, canine detection)

Monitors

Treatment/Remediation

Schools



Treatment/Remediation

Schools

Check belongings

DO NOT PANIC

Students should limit what they bring to school

Students should store school supplies in protective sealable totes when at home

Treatment/Remediation

Healthcare

If bed bugs are seen; personal effects should be isolated and placed in sealed bags

Family or responsible party should be notified

Equipment or area where bed bugs are found should be thoroughly inspected; contact pest management professional for detailed treatment strategy

Treatment/Remediation

Workplaces

If bed bugs are seen; personal effects should be isolated and placed in sealed bags

Employees within the area should be notified that bed bugs were seen

Equipment or area where bed bugs are found should be thoroughly inspected; contact pest management professional for detailed treatment strategy

Non-Residences; Bed Bug Programs

Have written program in place outline steps to take if a bed bug is detected

Educational programs for everyone involved

Staff, Employees, Teachers, Students (Parents/Guardians)

Programs should include:

- basic identification

- biology and life cycle

- where to look

- truths and fallacies

Non-Residences; Bed Bug Programs

Have written program in place outline steps to take if a bed bug is detected

Educational programs for everyone involved

- Staff

- Employees

- Teachers

- Students (Parents/Guardians)

Ongoing, Routine Inspections and Monitoring of a given area

- Canine inspections

- Physical inspections by pest management professionals

- Monitoring (passive and active devices available)

Non-Residences; Bed Bug Programs

General "Do"



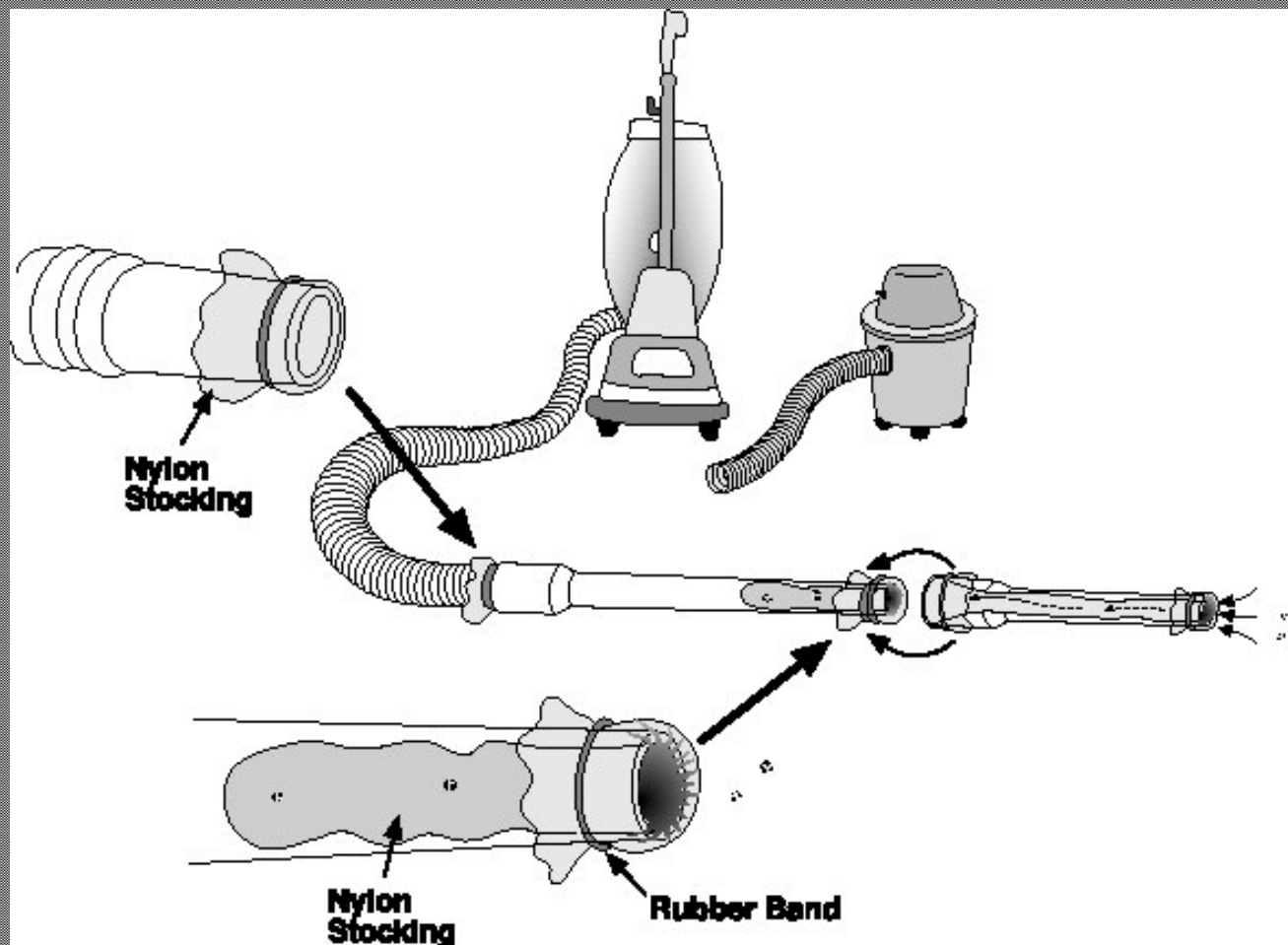
Non-Residences; Bed Bug Programs

General "Do"



Non-Residences; Bed Bug Programs

General "Do"



Non-Residences; Bed Bug Programs

General "Do"



Non-Residences; Bed Bug Programs

General "Do"



But *Please.....* Don't !!!



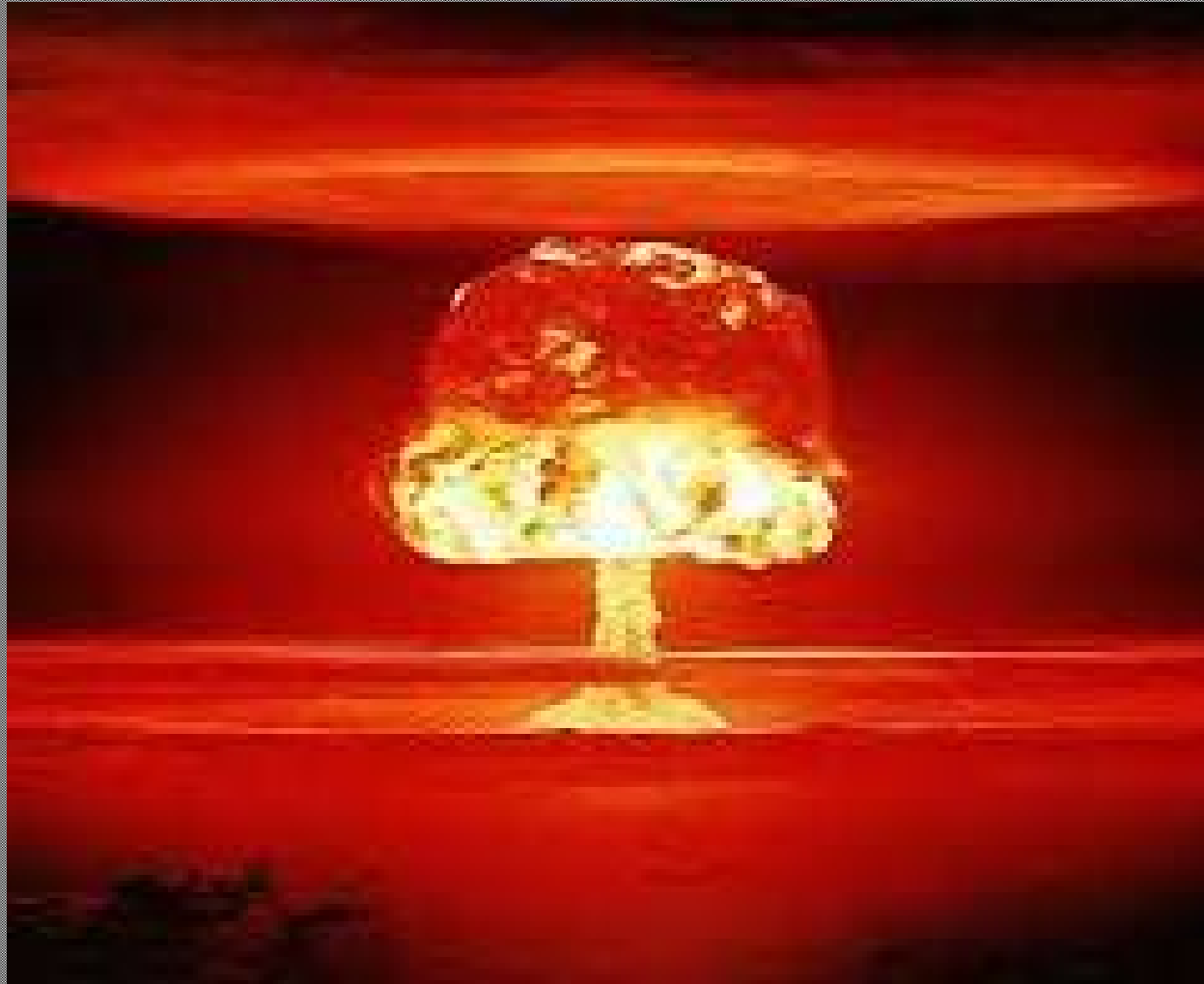
But *Please.....* Don't !!!



But *Please.....* Don't !!!



But *Please.....* Don't !!!



Questions ?.....Thanks !!

